

**LA7910****TV Tuner Band Selector****Overview**

The LA7910 is an IC for tuner band selection of electronic tuning type television set. This IC is used for producing the VHF channel "L" band power supply/VHF channel "H" band power supply/UHF channel power supply for tuner and the CATV power supply according to the band select signal of 2 inputs.

Functions

- VHF "L" band power supply output.
- VHF "H" band power supply output.
- UHF power supply output.
- CATV power supply output.

Features

- 2 inputs and 4 outputs.
- Low output saturation voltage : 0.25V typ., $I_O=60\text{mA}$.
- Compact 9-pin single-end package.

Specifications

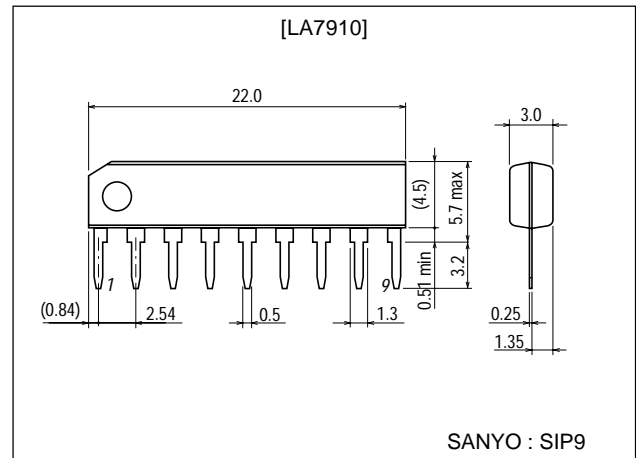
Maximum Ratings at $T_a = 25^\circ\text{C}$

Parameter	Symbol	Conditions	Ratings	Unit
Maximum supply voltage	V_g max		15	V
Maximum load current	I_1 max, I_2 max, I_7 max, I_8 max		-60	mA
Maximum supply current V_{CC2}	I_6 max		10	mA
Input current	I_3 max, I_4 max		2	mA
Allowable power dissipation	P_d max		200	mW
Operating temperature	T_{opr}		-20 to +85	$^\circ\text{C}$
Storage temperature	T_{stg}		-55 to +125	$^\circ\text{C}$

Package Dimensions

unit:mm

3017D-SIP9



■ Any and all SANYO products described or contained herein do not have specifications that can handle applications that require extremely high levels of reliability, such as life-support systems, aircraft's control systems, or other applications whose failure can be reasonably expected to result in serious physical and/or material damage. Consult with your SANYO representative nearest you before using any SANYO products described or contained herein in such applications.

■ SANYO assumes no responsibility for equipment failures that result from using products at values that exceed, even momentarily, rated values (such as maximum ratings, operating condition ranges, or other parameters) listed in products specifications of any and all SANYO products described or contained herein.

SANYO Electric Co.,Ltd. Semiconductor Company

TOKYO OFFICE Tokyo Bldg., 1-10, 1 Chome, Ueno, Taito-ku, TOKYO, 110-8534 JAPAN

LA7910

Operating Characteristics at $T_a = 25^\circ\text{C}$

Parameter	Symbol	Conditions	Ratings			Unit
			min	typ	max	
Current drain	I_1, I_2, I_7, I_8				60	mA
Output saturation voltage	$V_{O(sat)}$	$V_9=12\text{V}, I_6=5\text{mA}, I_O=60\text{mA}$	0	0.25	0.7	V
Input high-level threshold voltage	V_{TH}				3.0	V
Input low-level threshold voltage	V_{TL}		0.8			V
Output leakage current	I_1, I_2, I_7, I_8	$T_a \leq 70^\circ\text{C}$			50	μA

Note) Current direction :

Current flowing into IC : Pulse (No sign)

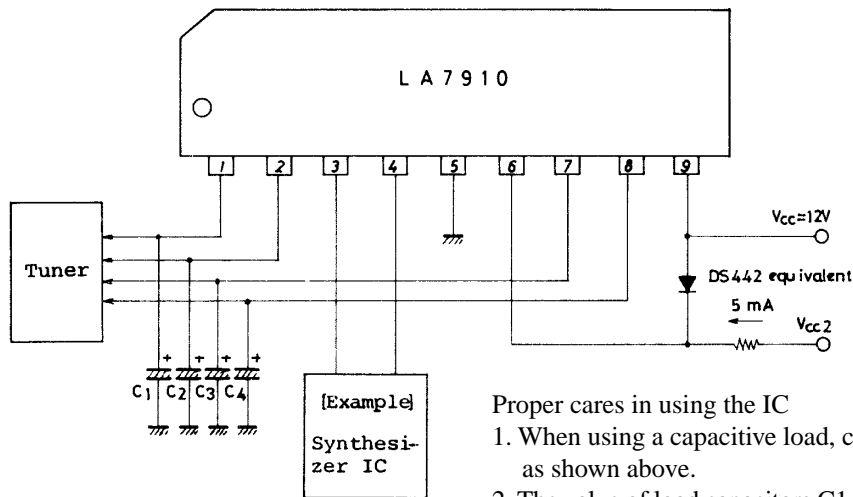
Current flowing out of IC : Minus (-)

Truth Table

Input		Output			
Pin 3	Pin 4	Pin 1	Pin 2	Pin 7	Pin 8
L	L	H	Z	Z	Z
H	L	Z	H	Z	Z
L	H	Z	Z	H	Z
H	H	Z	Z	Z	H

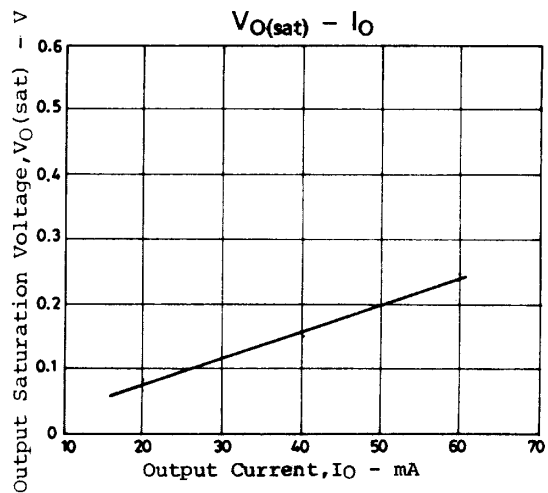
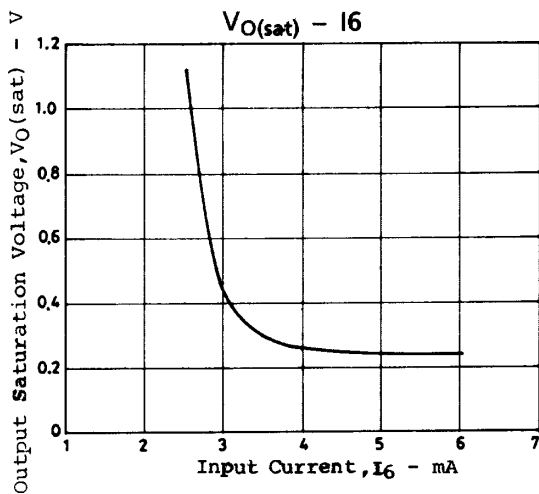
Input threshold voltage
: $V_{TL}=0.8\text{V}, V_{TH}=3\text{V}$

Sample Application Circuit



Proper cares in using the IC

1. When using a capacitive load, connect a diode across pins 6 and 9 as shown above.
2. The value of load capacitors C1, C2, C3, C4 must not exceed $22\mu\text{F}$.



- Specifications of any and all SANYO products described or contained herein stipulate the performance, characteristics, and functions of the described products in the independent state, and are not guarantees of the performance, characteristics, and functions of the described products as mounted in the customer's products or equipment. To verify symptoms and states that cannot be evaluated in an independent device, the customer should always evaluate and test devices mounted in the customer's products or equipment.
- SANYO Electric Co., Ltd. strives to supply high-quality high-reliability products. However, any and all semiconductor products fail with some probability. It is possible that these probabilistic failures could give rise to accidents or events that could endanger human lives, that could give rise to smoke or fire, or that could cause damage to other property. When designing equipment, adopt safety measures so that these kinds of accidents or events cannot occur. Such measures include but are not limited to protective circuits and error prevention circuits for safe design, redundant design, and structural design.
- In the event that any or all SANYO products(including technical data, services) described or contained herein are controlled under any of applicable local export control laws and regulations, such products must not be exported without obtaining the export license from the authorities concerned in accordance with the above law.
- No part of this publication may be reproduced or transmitted in any form or by any means, electronic or mechanical, including photocopying and recording, or any information storage or retrieval system, or otherwise, without the prior written permission of SANYO Electric Co., Ltd.
- Any and all information described or contained herein are subject to change without notice due to product/technology improvement, etc. When designing equipment, refer to the "Delivery Specification" for the SANYO product that you intend to use.
- Information (including circuit diagrams and circuit parameters) herein is for example only ; it is not guaranteed for volume production. SANYO believes information herein is accurate and reliable, but no guarantees are made or implied regarding its use or any infringements of intellectual property rights or other rights of third parties.

This catalog provides information as of October, 2000. Specifications and information herein are subject to change without notice.